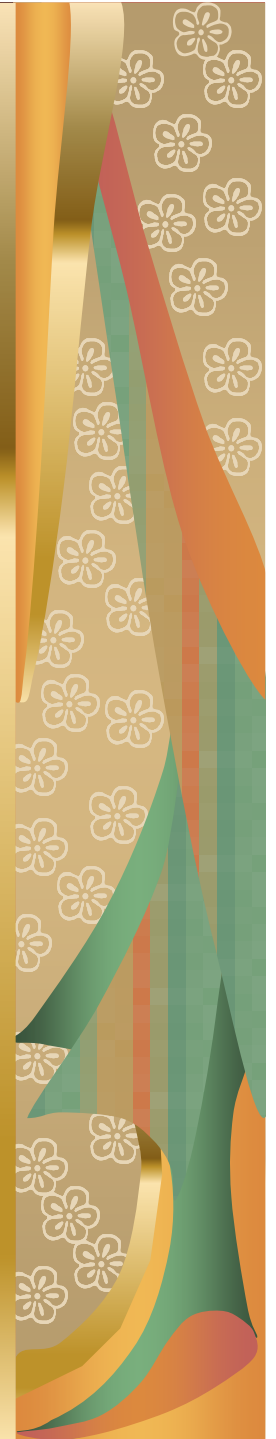


# False Wisdom

James 3:13-16

Dr. Steve Hereford

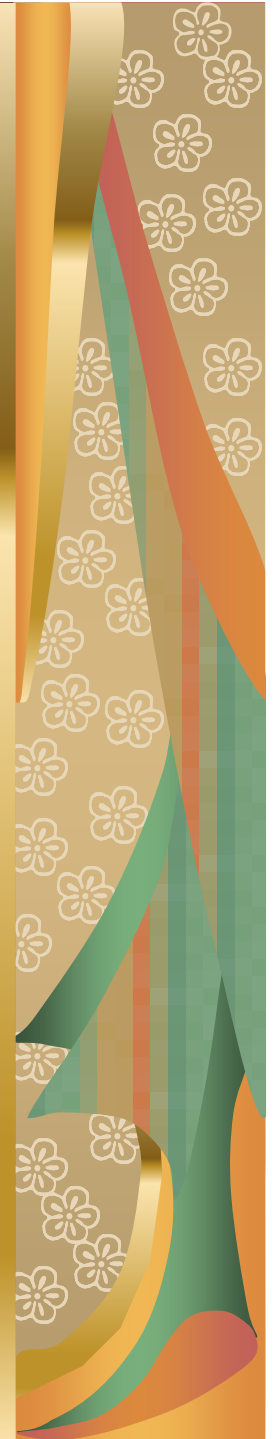
Pastor-Teacher



# The Test of Wisdom (v.13)





 The Question (v.13a)

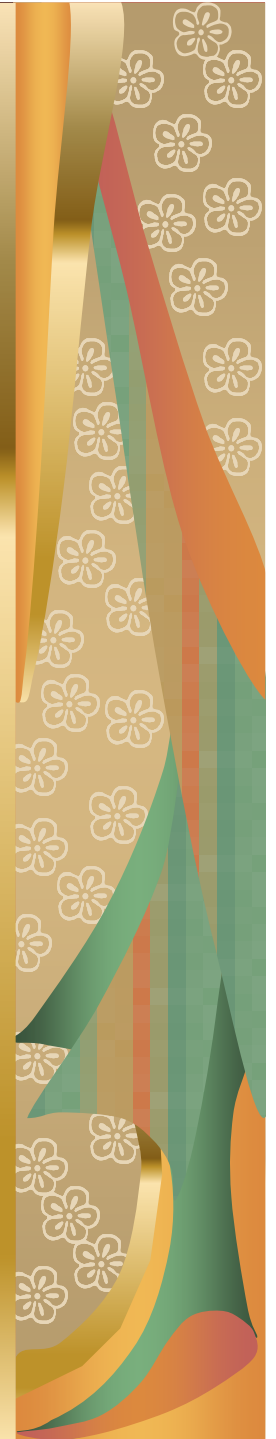
 The Exhortation (v.13b)




# False Wisdom (vv.14-16)

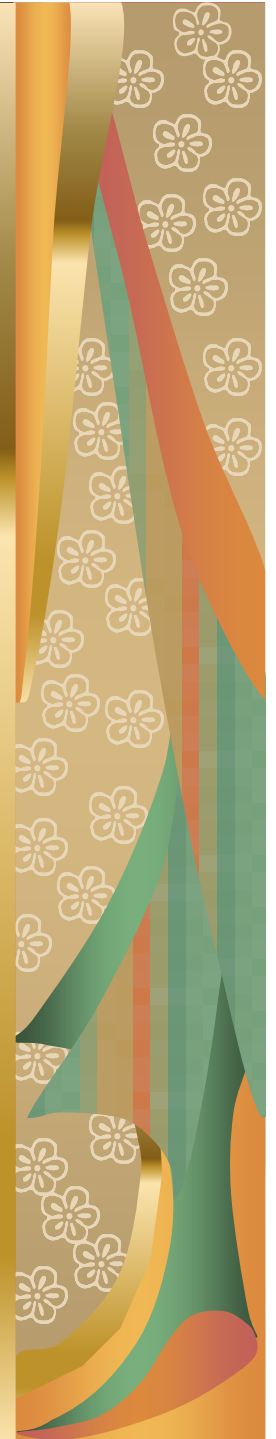
## The Motivation (v.14)

-  Motivation is always determined in the heart
-  Of the several sinful motives behind wisdom, James mentions only two here
  -  Bitter envy
  -  Self-seeking



# False Wisdom (vv.14-16)

 A person whose motives are based on the world's wisdom is arrogant



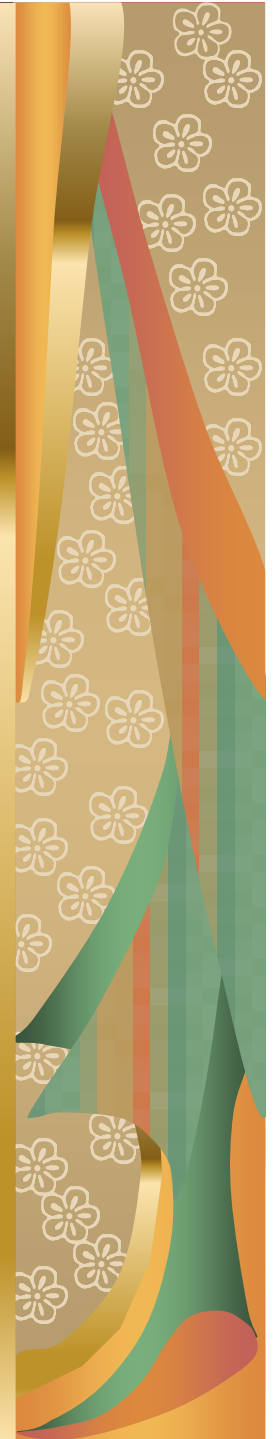
# False Wisdom (vv.14-16)

## The Characteristics (v.15)

 Earthy

 Sensual

 Demonic



# False Wisdom (vv.14-16)

## The Results (v.16)

 Confusion

 Every evil thing

