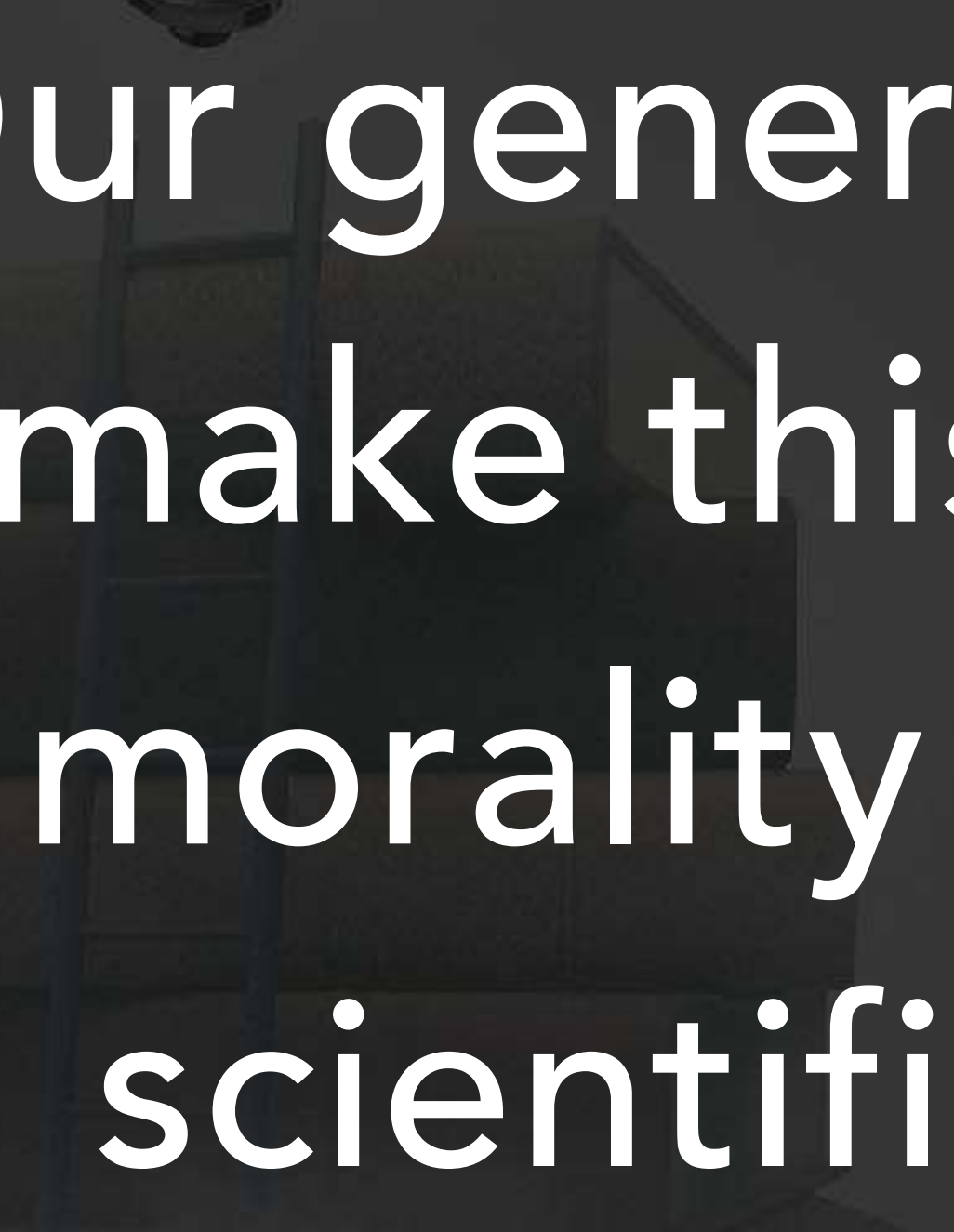




**Z** THE LITTLE  
**JOH** BOOK WITH THE  
**JO** BIG IDEAS

A faint, grayscale illustration of a glowing lightbulb is positioned in the upper left corner. Below it, a stack of several books is visible, with their spines facing left. The background is a dark, textured gray.

Our generation has attempted to  
make this sort of upside-down  
morality appears to be smart,  
scientific, and sophisticated.



“The word ‘sin,’ which seems to have disappeared, was a proud word. It was once a strong word, an ominous and serious word. It described a central point in every civilized human beings life plan and life style. But the word went away. **It has almost disappeared - the word, along with the notion.** Why? Doesn’t anyone sin anymore? Doesn’t anyone believe in sin?”

- *Dr. Karl Menninger*



Whatever happened to sin?

A lightbulb is suspended in the air, positioned above a wooden ladder. The ladder is leaning against a tall stack of books. The entire scene is set against a dark, textured background.

# STRAIGHT TALK ABOUT SIN

---

*1 John 3:4-10*

## 1 John 3:4-7

3:4 - Sin is serious because it is rebellion against God

3:5 - Sin is opposed to Christ's appearing to take away sins

3:6 - A true Christian does not live in sin

3:7 - A true Christian practices righteousness

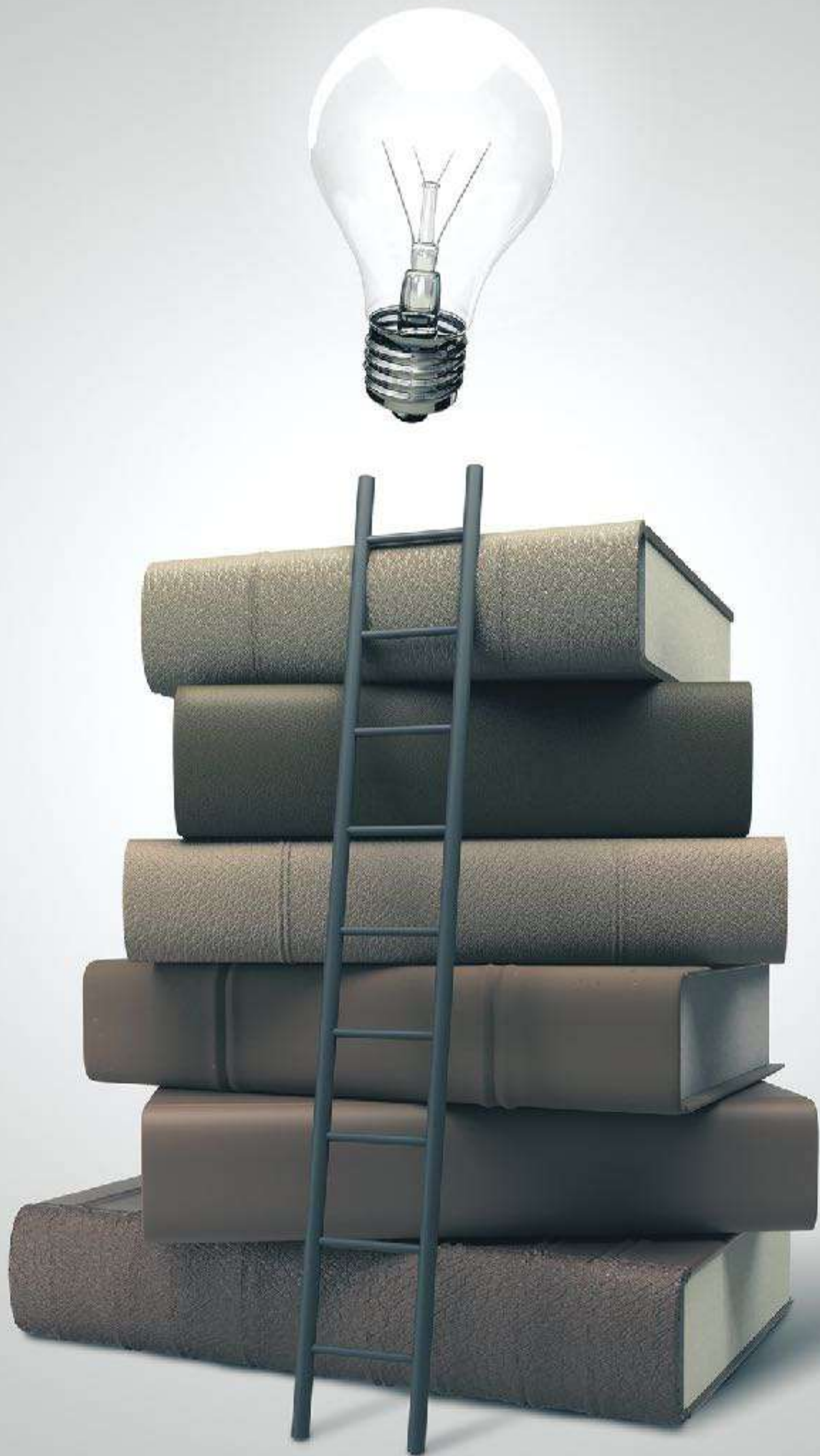
## 1 John 3:8-10

3:8a - Sin is serious because it originates with the devil

3:8b - Sin is opposed to Christ's appearing to destroy the works of the devil

3:9 - A true Christian cannot live in sin

3:10 - A true Christian practices righteousness and love



# A LIFESTYLE OF SIN IS **REBELLION** **AGAINST GOD** (3:4,8A)

1. Sin originates as lawlessness (3:4)



“

A right knowledge of sin lies at the root of all saving Christianity ... If a man does not realize the dangerous nature of his soul's disease, you cannot wonder if he is content with false or imperfect remedies.

J.C. Ryle, *Holiness*, James Clarke & Co. pg. 1

”





# A LIFESTYLE OF SIN IS **REBELLION** **AGAINST GOD** (3:4,8A)

1. Sin originates as lawlessness (3:4)
2. Sin originates from the devil (3:8a)

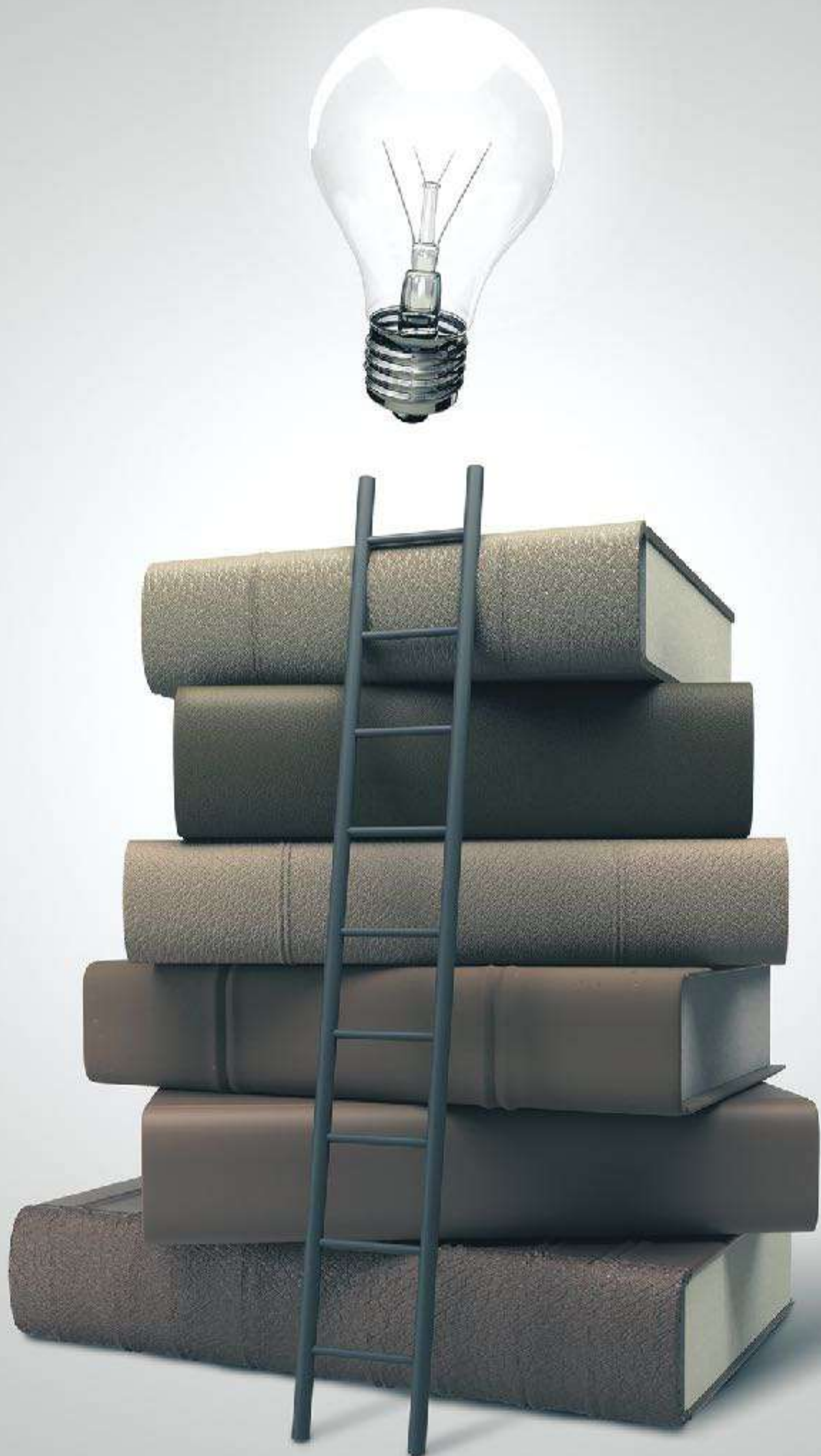


“

How you are fallen from heaven, O Day Star, Son of Dawn! How you are cut down from the ground ... You said in your heart, 'I will ascend to heaven ... I will set my throne on high; I will set on the mount of assembly ... I will ascend ... I will make myself like the Most High.

Isaiah 14:12-14, ESV

”



# A LIFESTYLE OF SIN IS **REBELLION** **AGAINST GOD** (3:4,8A)

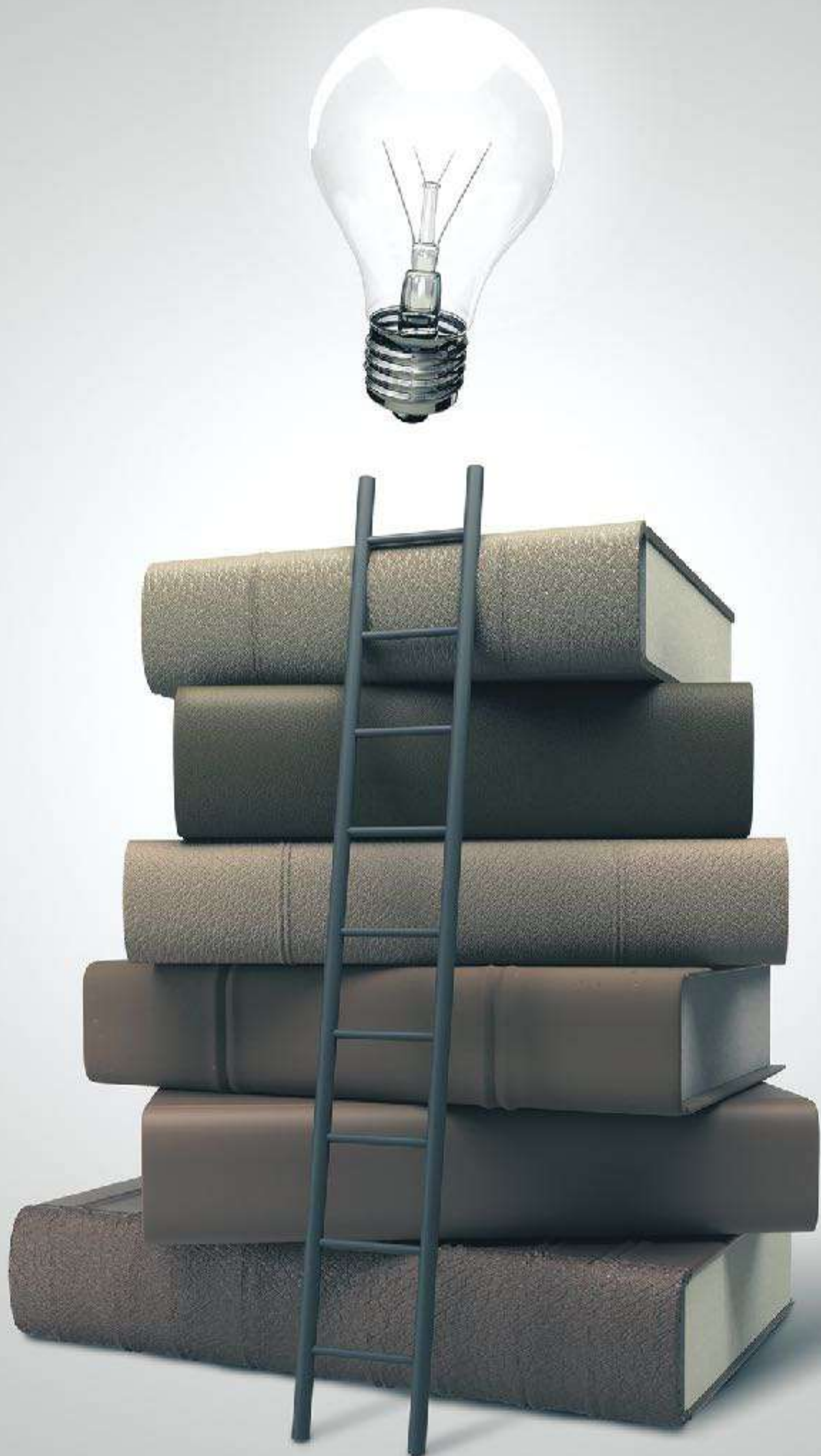
1. Sin originates as lawlessness (3:4)
2. Sin originates from the devil (3:8a)

A lightbulb is suspended in the air, positioned above a wooden ladder. The ladder is leaning against a tall stack of books. The entire scene is set against a dark, textured background.

# STRAIGHT TALK ABOUT SIN

---

*1 John 3:4-10*



# A LIFESTYLE OF SIN IS A REJECTION OF CHRIST'S PURPOSE (3:5,8B)

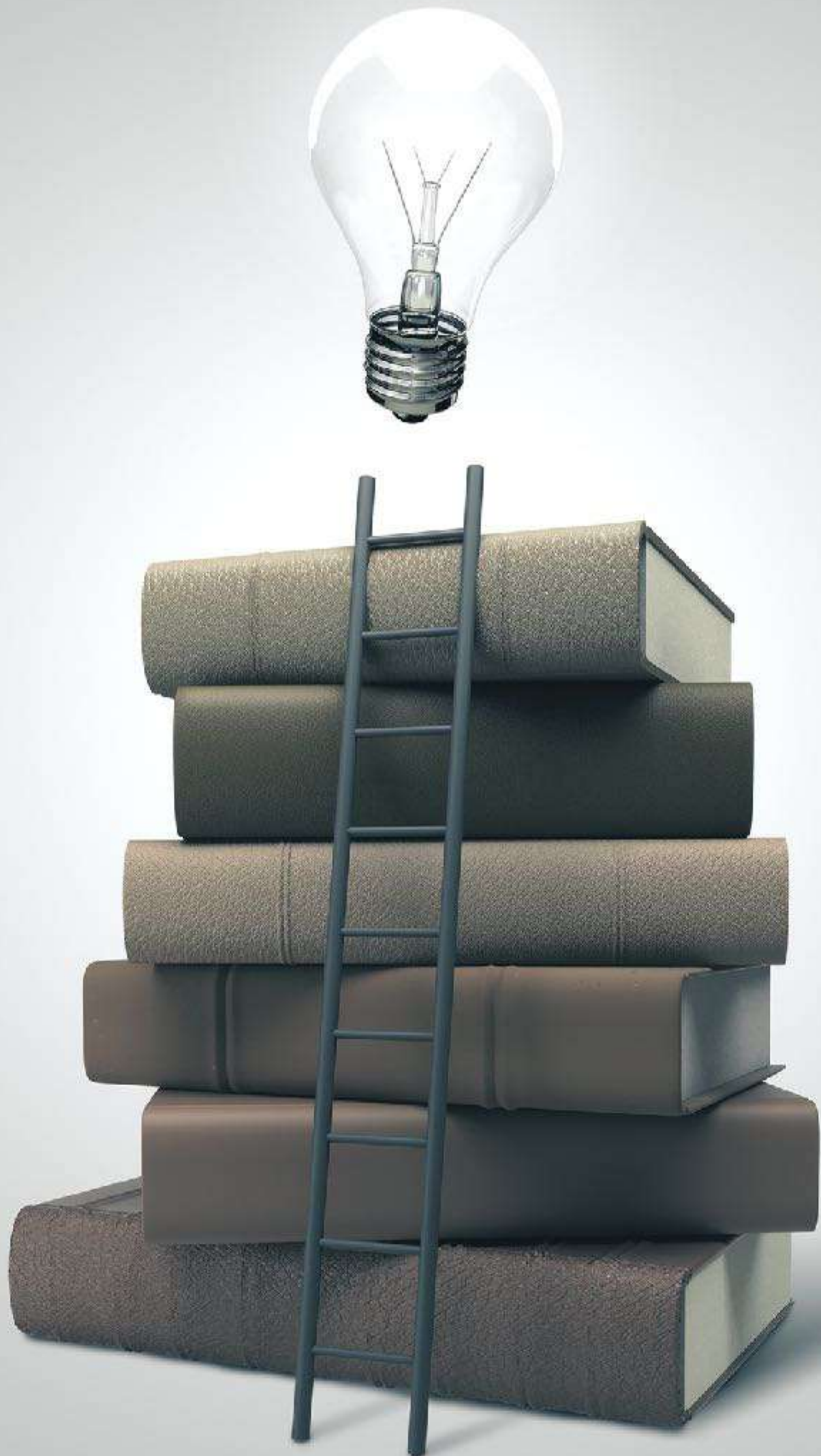
1. Sin is opposed to Christ's plan for saving mankind (3:5)

“

Behold, the Lamb of God who takes  
away the sins of the the world.

John 1:29

”



# A LIFESTYLE OF SIN IS A REJECTION OF CHRIST'S PURPOSE (3:5,8B)

1. Sin is opposed to Christ's plan for saving mankind (3:5)
2. Sin is opposed to Christ's plan of freeing mankind (3:8b)

“

For the death he died to sin, once for all,  
but the life he lives he lives to God. So  
you also must consider yourselves dead to  
sin and live to God in Christ Jesus.

Romans 6:10-12, ESV

”





# A LIFESTYLE OF SIN IS A REJECTION OF CHRIST'S PURPOSE (3:5,8B)

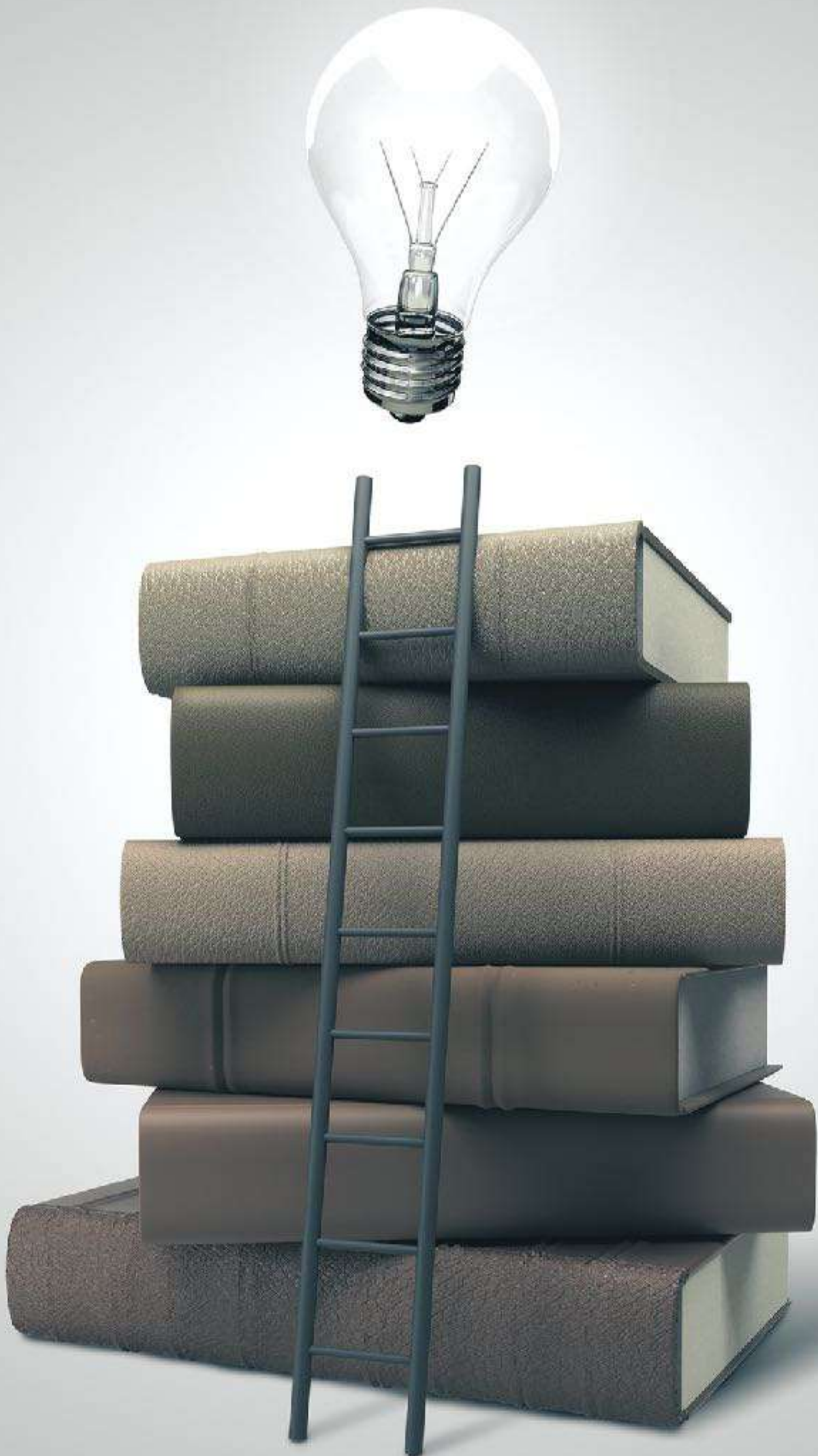
1. Sin is opposed to Christ's plan for saving mankind (3:5)
2. Sin is opposed to Christ's plan of freeing mankind (3:8b)

A lightbulb is suspended in the air, positioned above a wooden ladder. The ladder is leaning against a tall stack of books. The entire scene is set against a dark, textured background.

# STRAIGHT TALK ABOUT SIN

---

*1 John 3:4-10*

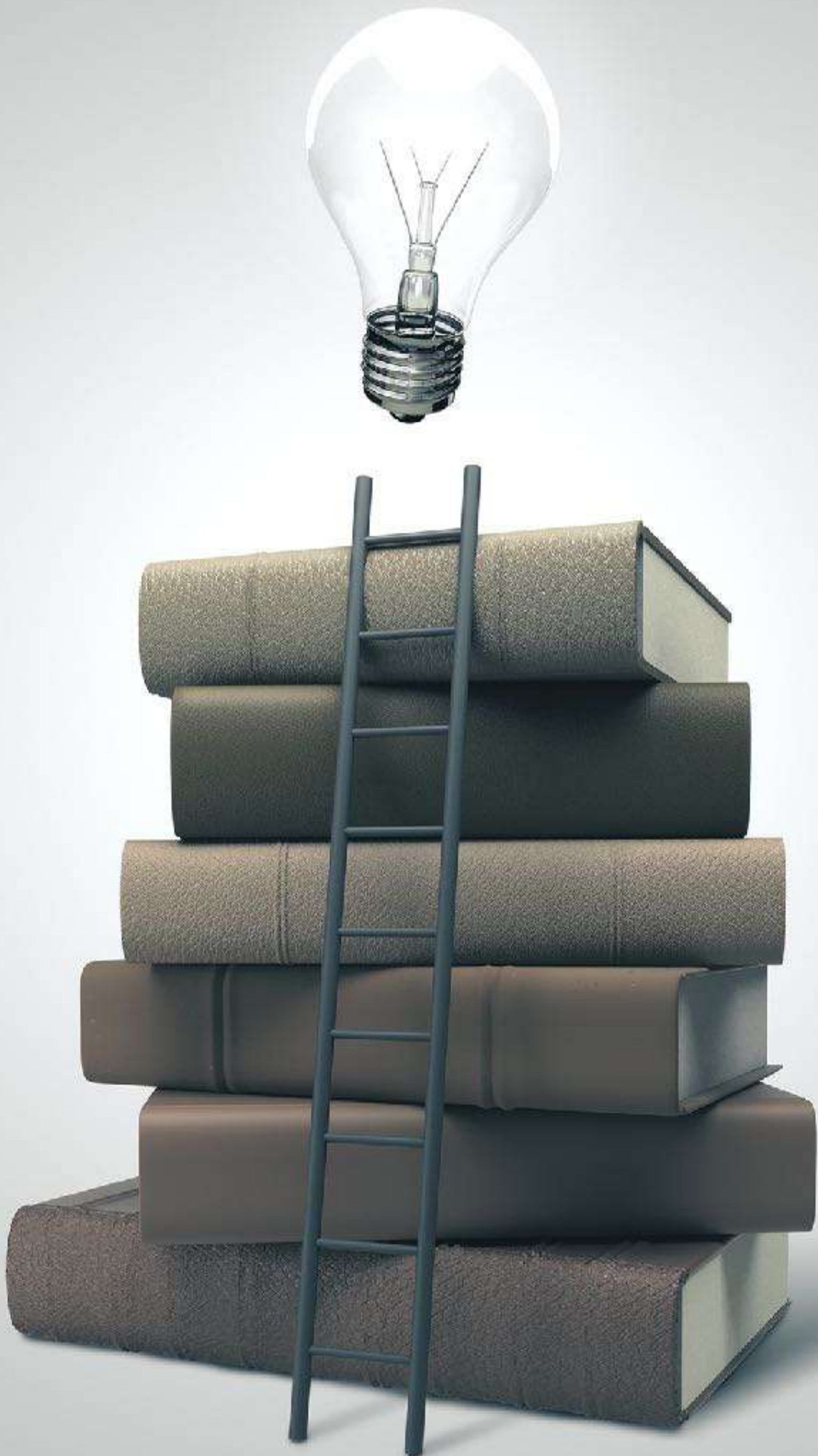


# A LIFESTYLE OF CAN NEVER BE THE REPUTATION OF A TRUE BELIEVER (3:7,10)

Two possible ways to interpret this passage:

1. *The Absolute View*: John is referring to a single act of sin

2. *The Habitual View*: John has in mind those who habitually sin



# A LIFESTYLE OF CAN NEVER BE THE REPUTATION OF A TRUE BELIEVER (3:7,10)

The sinful lives of false professors betray them

1. Anyone who knows Christ does not live in sin
2. If someone lives in sin, it shows that he has not seen Jesus as He revealed Himself

A lightbulb is suspended in the air, positioned above a wooden ladder. The ladder is leaning against a tall stack of books. The entire scene is set against a dark, textured background.

# STRAIGHT TALK ABOUT SIN

---

*1 John 3:4-10*



**Z** THE LITTLE  
**JOH** BOOK WITH THE  
**JO** BIG IDEAS