



**Z** THE LITTLE  
**JOH** BOOK WITH THE  
**JO** BIG IDEAS



A faint background image of a lightbulb on a wooden crate. The lightbulb is at the top, and the crate is below it. The text is overlaid on this background.

## *3 Tests of Salvation giving in 1 John*

1. The Moral Test
2. The Doctrinal Test
3. The Relational Test

A conceptual illustration on the left side of the slide. It features a glowing lightbulb at the top, symbolizing an idea or truth. Below it is a stack of several books, representing knowledge or study. A wooden ladder leans against the books, suggesting the process of reaching for higher understanding or enlightenment.

# TRUE LOVE

---

*1 John 3:11-18*

“

Love each other as I have  
loved you.

John 15:12

”



“

Let love be without dissimulation ... be kindly affectionate one to another with brotherly love; in honor preferring one another.

Romans 12:9-10

”



“

Bear ye one another's burdens, and  
so fulfill the law of Christ.

Galatians 6:2

”

“

What doth it profit, my brethren,  
though a man say he hath faith and  
have not works? Can faith save him?

James 2:14

”

A conceptual illustration on the left side of the slide. It features a glowing lightbulb at the top, a stack of several books below it, and a wooden ladder leaning against the books. The entire scene is rendered in a dark, muted color palette, with the lightbulb being the only source of light.

# TRUE LOVE

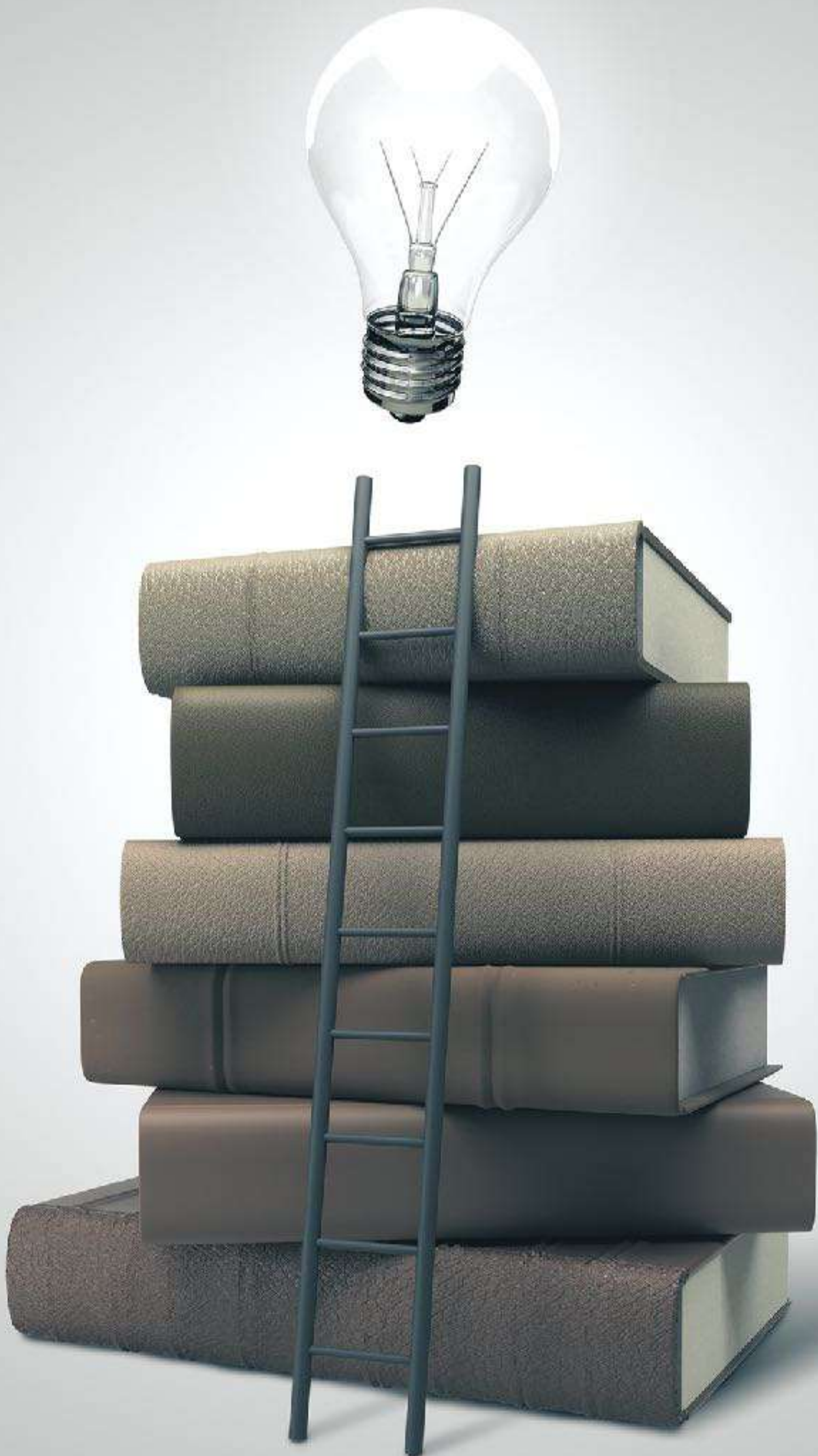
---

*1 John 3:11-18*





Because Jesus commands His  
followers to possess true love, you  
must identify and practice true love.



# WAKE UP! TRUE LOVE IS FROM THE BEGINNING (3:11)

- “The one who does not love his brother is not of God.” (1 John 3:11)
- The concept of Christian love is nothing new.



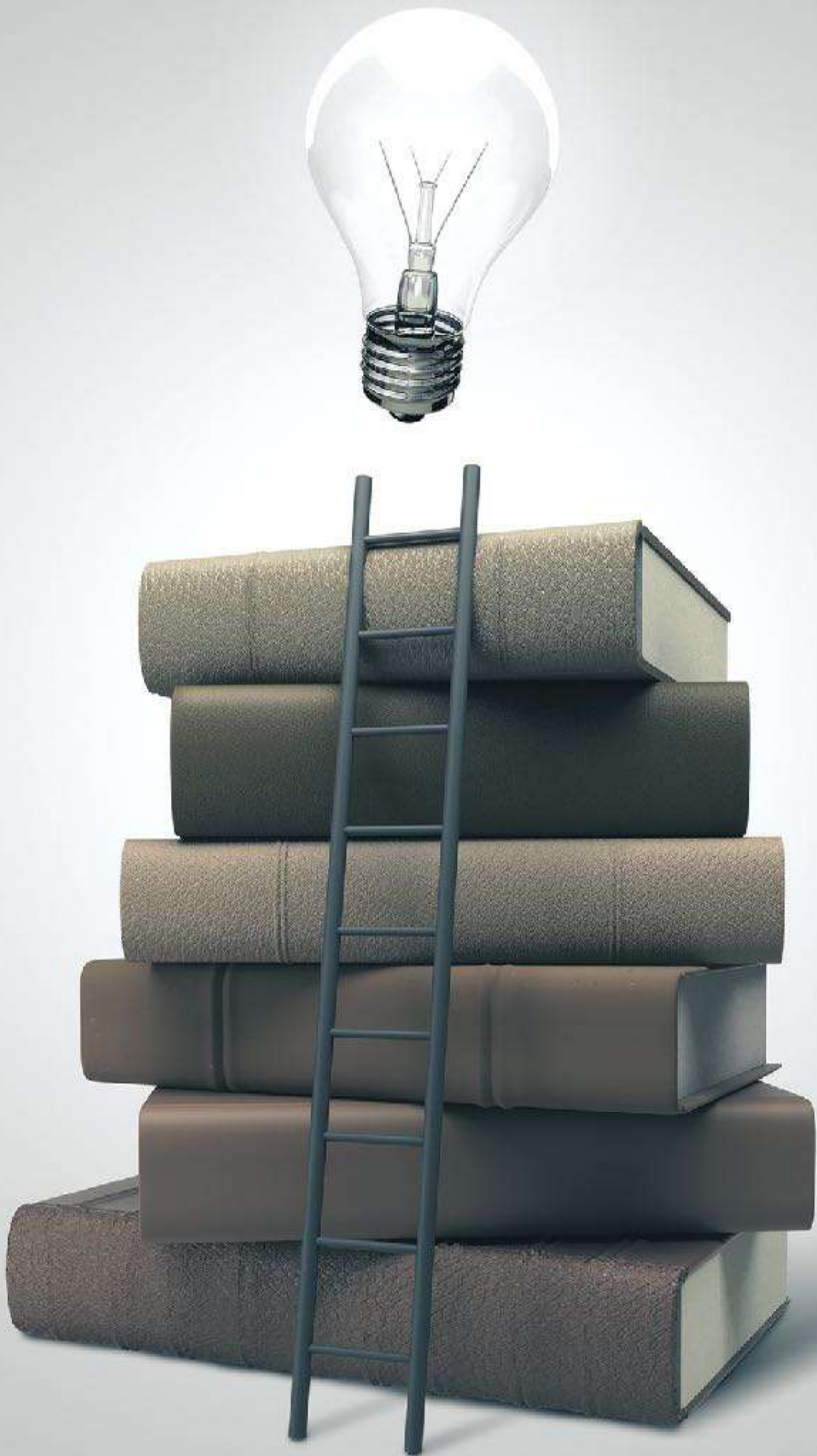
“

This is the message that you have  
heard from the beginning.

1 John 2:11

”





**WAKE UP!** TRUE LOVE IS  
FROM THE BEGINNING (3:11)

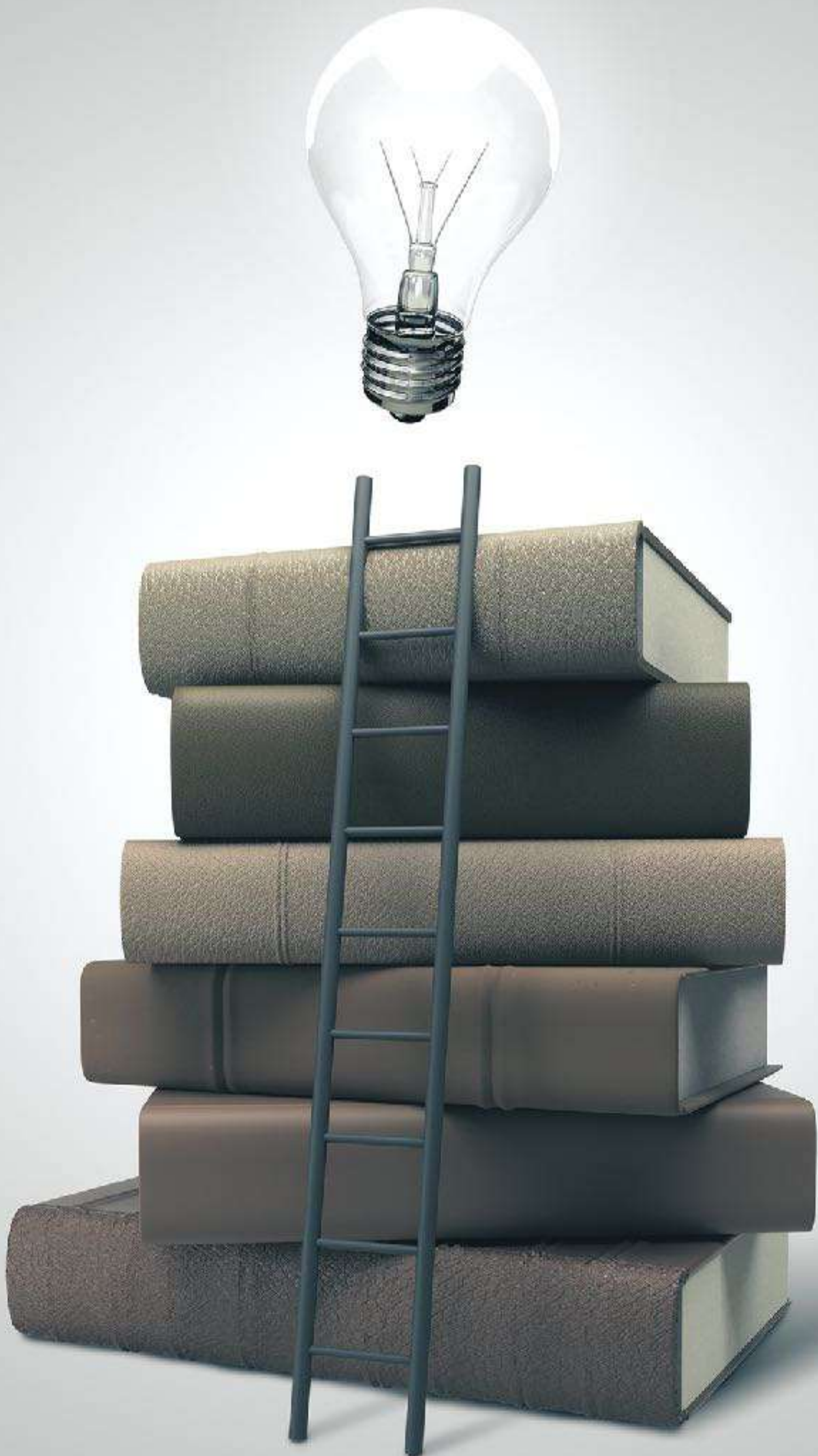


A conceptual illustration on the left side of the slide. It features a glowing lightbulb at the top, symbolizing an idea or truth. Below it is a stack of several books, representing knowledge or study. A wooden ladder leans against the books, suggesting the process of reaching for higher understanding or enlightenment.

# TRUE LOVE

---

*1 John 3:11-18*

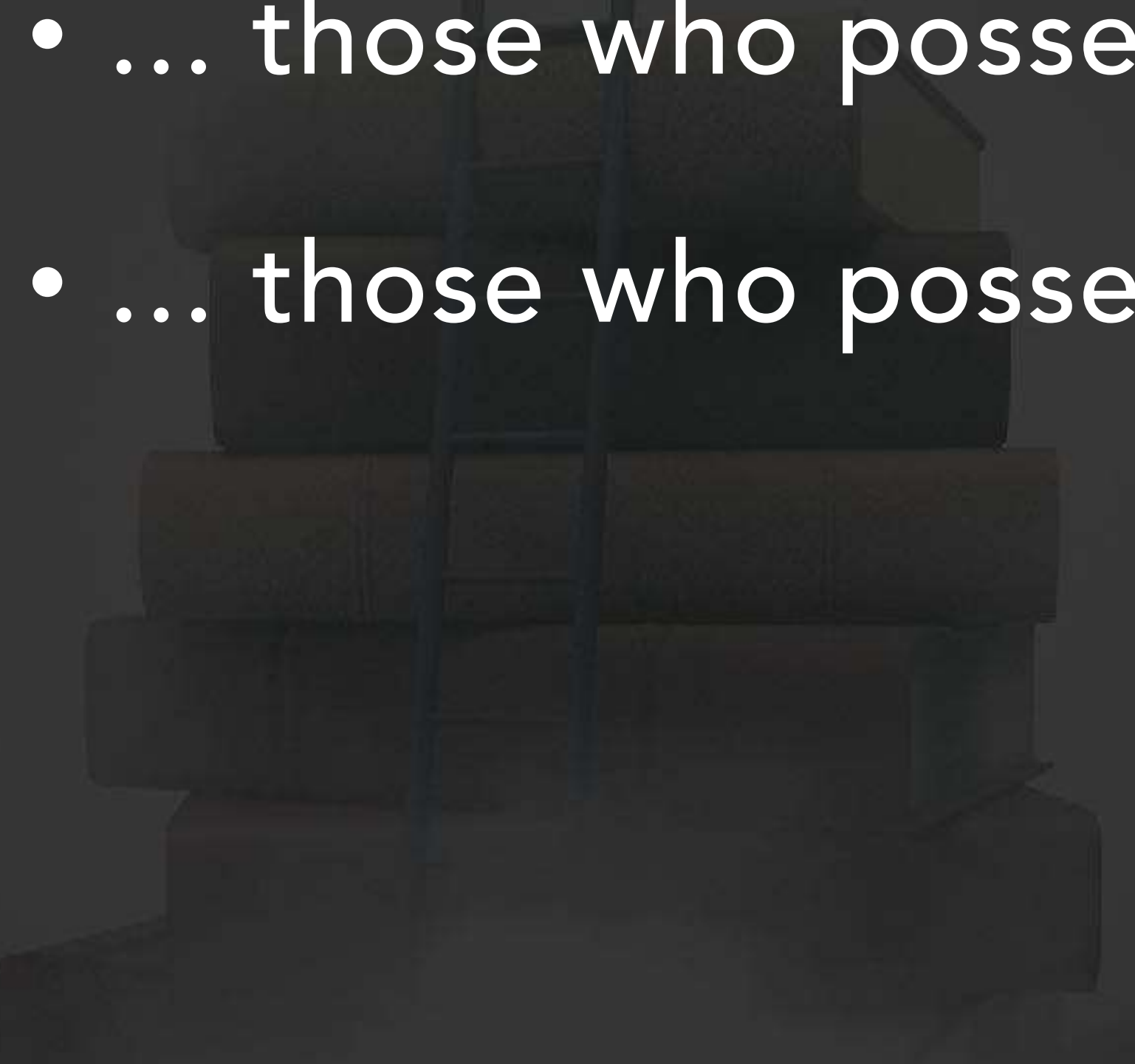


# SHAPE UP! TRUE LOVE REJECTS HATRED (3:12-15)

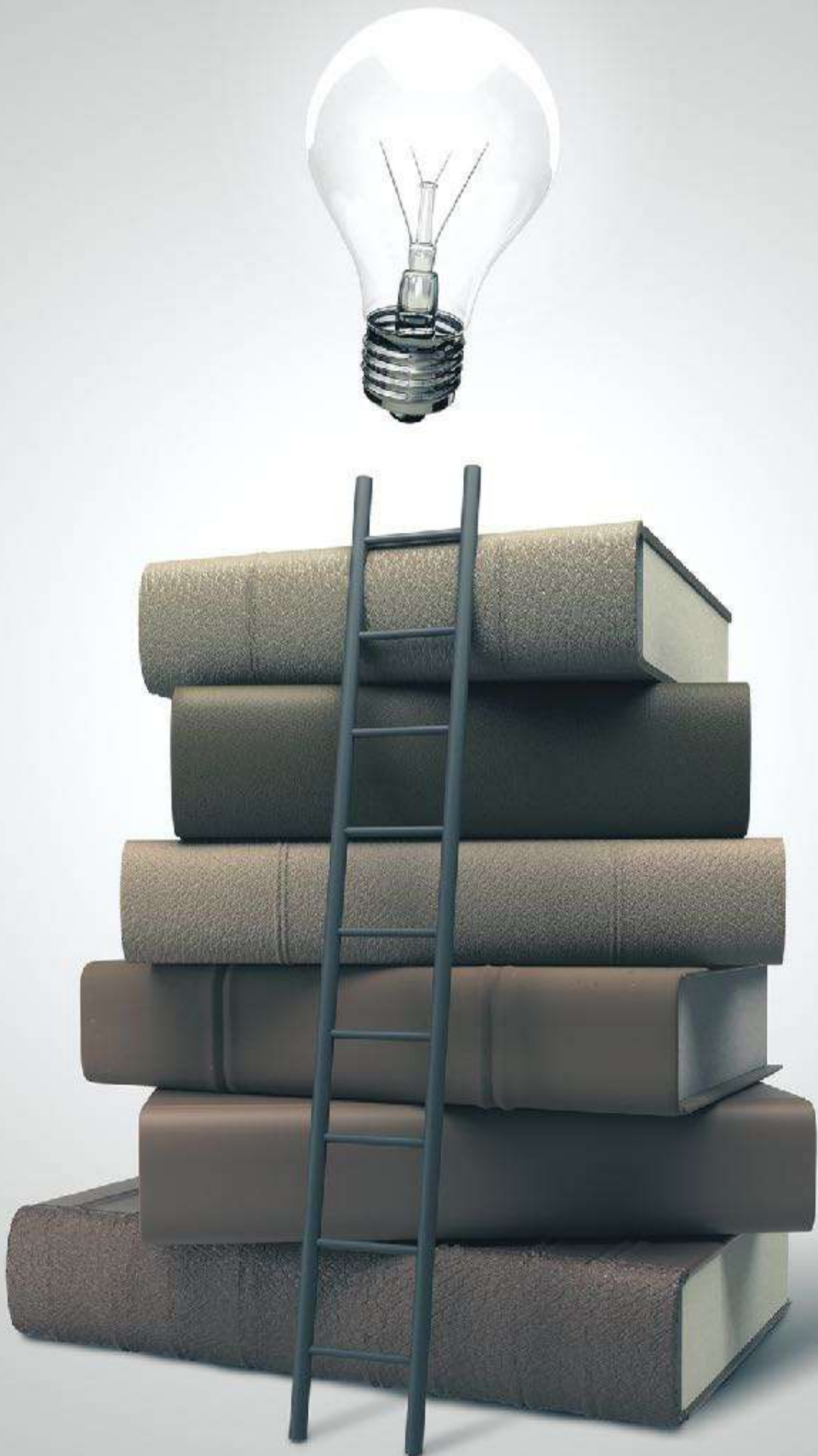
1. Hatred is a rejection of righteousness (v. 12)
2. Hatred is a characteristic of the world (v. 13-14)



# JOHN USES CONTRASTS ONCE AGAIN TO MAKE A POINT

- 
- ... those who possess life love each other.
  - ... those who possess death hate each other.





# SHAPE UP! TRUE LOVE REJECTS HATRED (3:12-15)

1. Hatred is a rejection of righteousness (v. 12)
2. Hatred is a characteristic of the world (v. 13-14)
3. Hatred is a serious offense (v. 15)

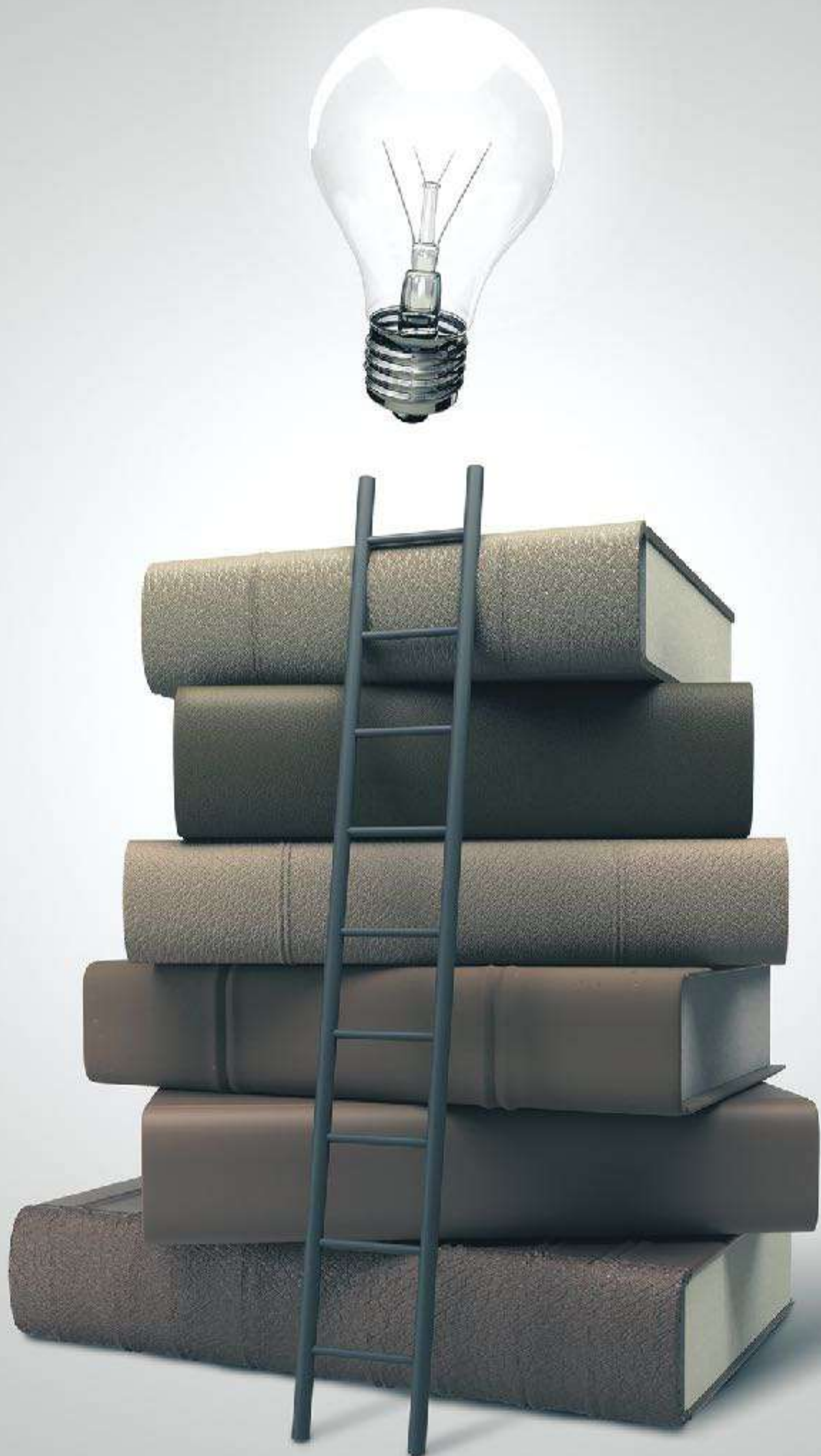


A conceptual illustration on the left side of the slide. It features a glowing lightbulb at the top, a stack of several books below it, and a wooden ladder leaning against the books. The entire scene is rendered in a dark, muted color palette, with the lightbulb being the only source of light.

# TRUE LOVE

---

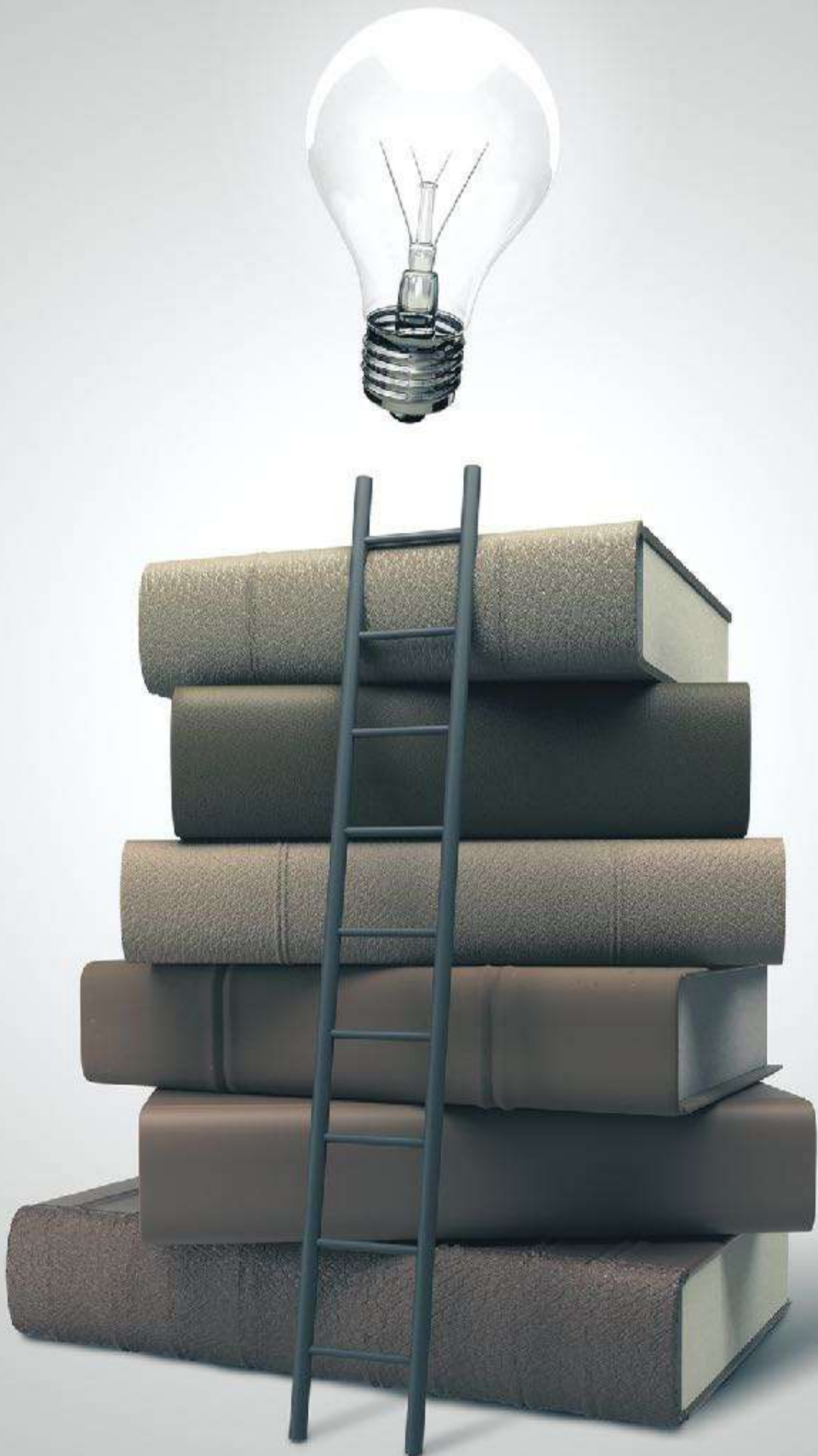
*1 John 3:11-18*



# SIGN UP! TRUE LOVE REQUIRES RADICAL SACRIFICE (3:16-18)

1. Sacrifice is seen in the person of Jesus (v. 16)
  - *"Laid down his life ..."*
  - *"... We ought to lay."*





# **SIGN UP!** TRUE LOVE REQUIRES RADICAL SACRIFICE (3:16-18)

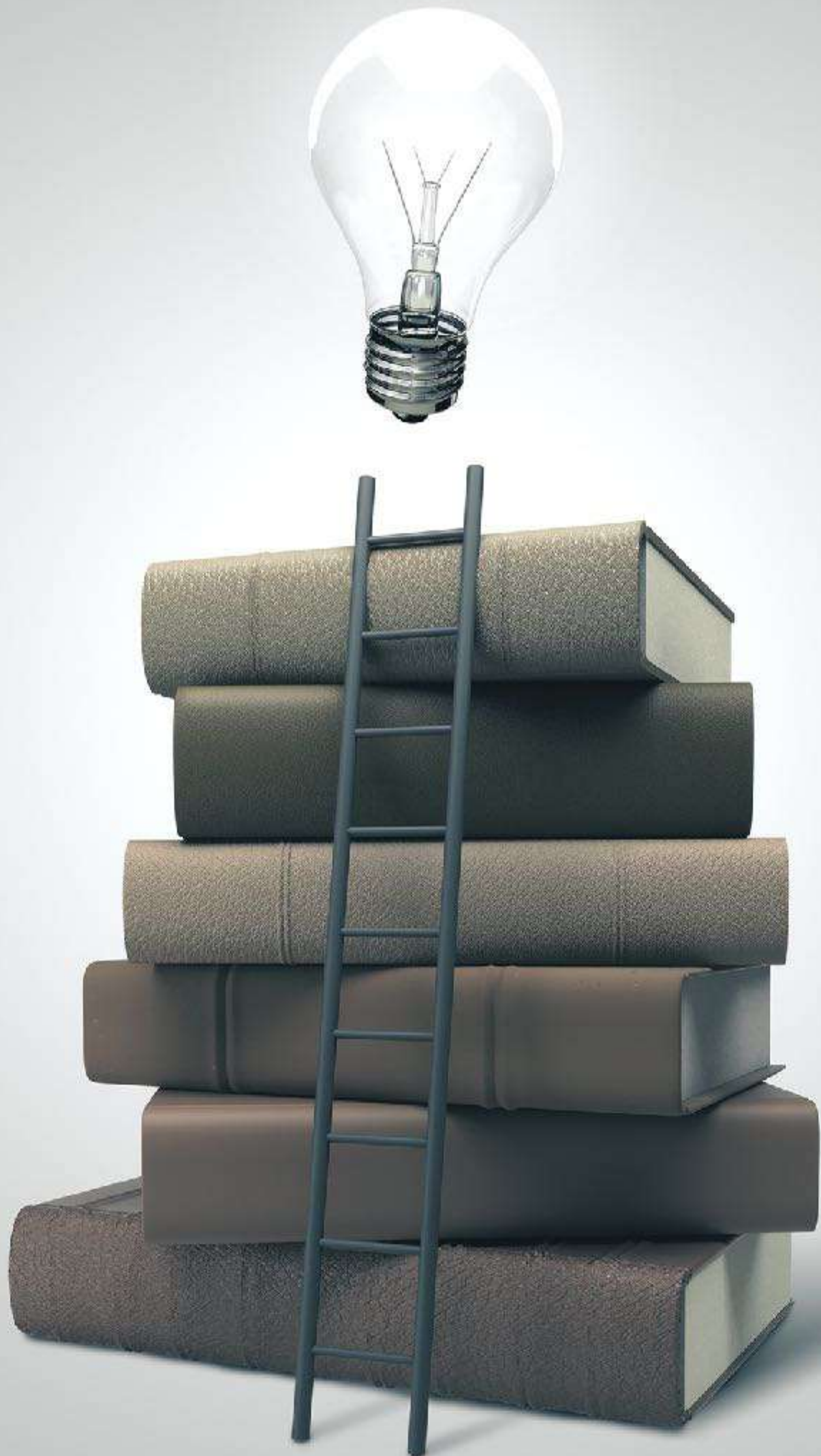
1. Sacrifice is seen in the person of Jesus (v. 16)
2. Sacrifice is made in the surrender of personal comfort (v. 17)

A faint background image on the left side of the slide. It features a glowing lightbulb at the top, with a stack of several books below it. The books are stacked in a slightly irregular manner, with some pages visible. The entire scene is rendered in a dark, monochromatic style, likely a grayscale or dark blue tint, which blends into the dark background of the slide.

*John's Formula for Practical Love*

Possess the means to meet a need +  
see a need = meet the need





# **SIGN UP!** TRUE LOVE REQUIRES RADICAL SACRIFICE (3:16-18)

1. Sacrifice is seen in the person of Jesus (v. 16)
2. Sacrifice is made in the surrender of personal comfort (v. 17)
3. Sacrifice is practiced in the realm of consistent action (v. 18)

A conceptual illustration on the left side of the slide. It features a glowing lightbulb at the top, a stack of several books below it, and a wooden ladder leaning against the books. The entire scene is rendered in a dark, muted color palette, with the lightbulb providing a subtle point of light.

# TRUE LOVE

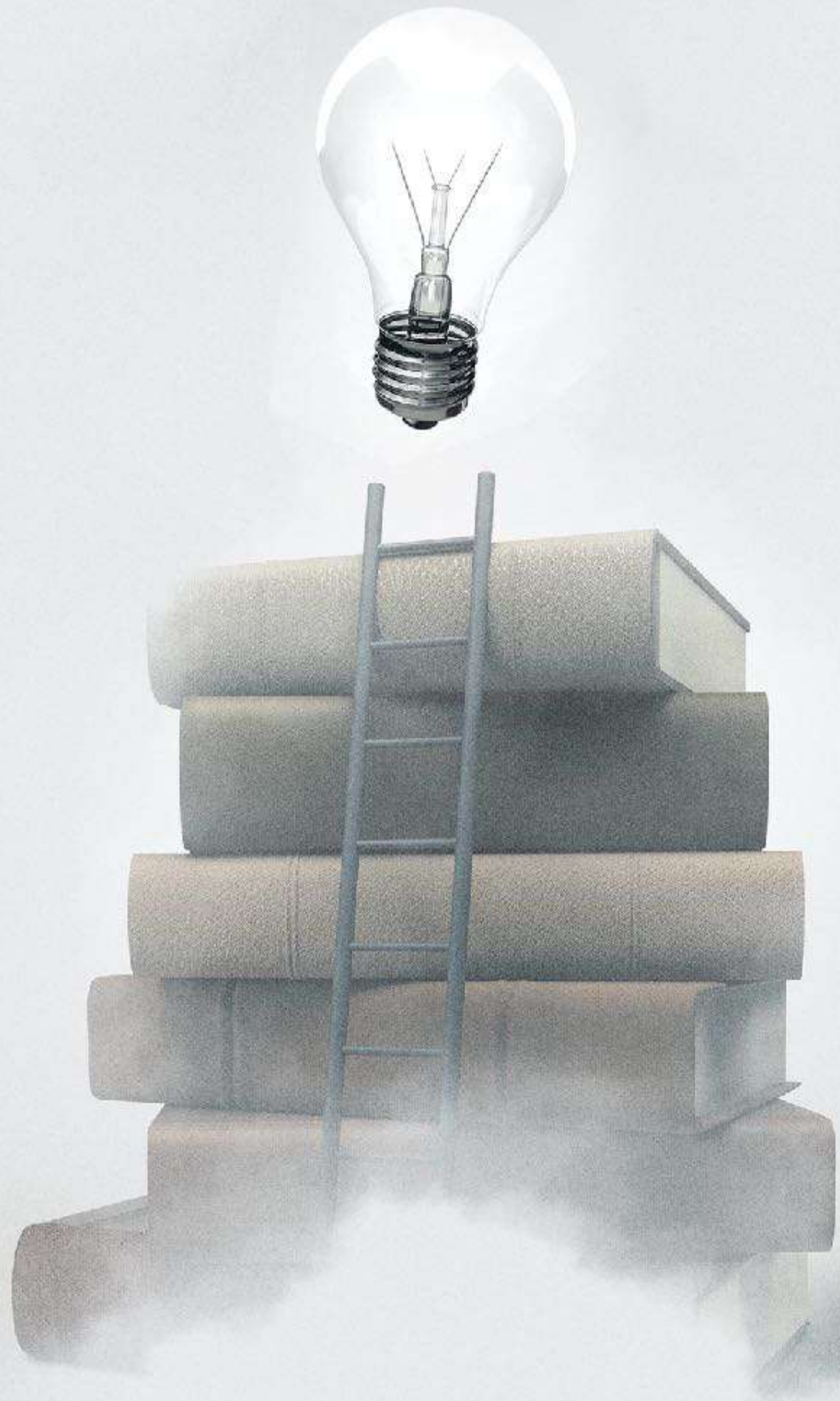
---

*1 John 3:11-18*



Because Jesus commands His  
followers to possess true love, you  
must identify and practice true love.





**Z** THE LITTLE  
**JOH** BOOK WITH THE  
**JO** BIG IDEAS